



# GOVERNO DO ESTADO DO CEARÁ

*Secretaria da Proteção Social,  
Justiça, Cidadania, Mulheres  
e Direitos Humanos*

# Total de Atendimentos

16630 mulheres atendidas  
21907 atendimentos

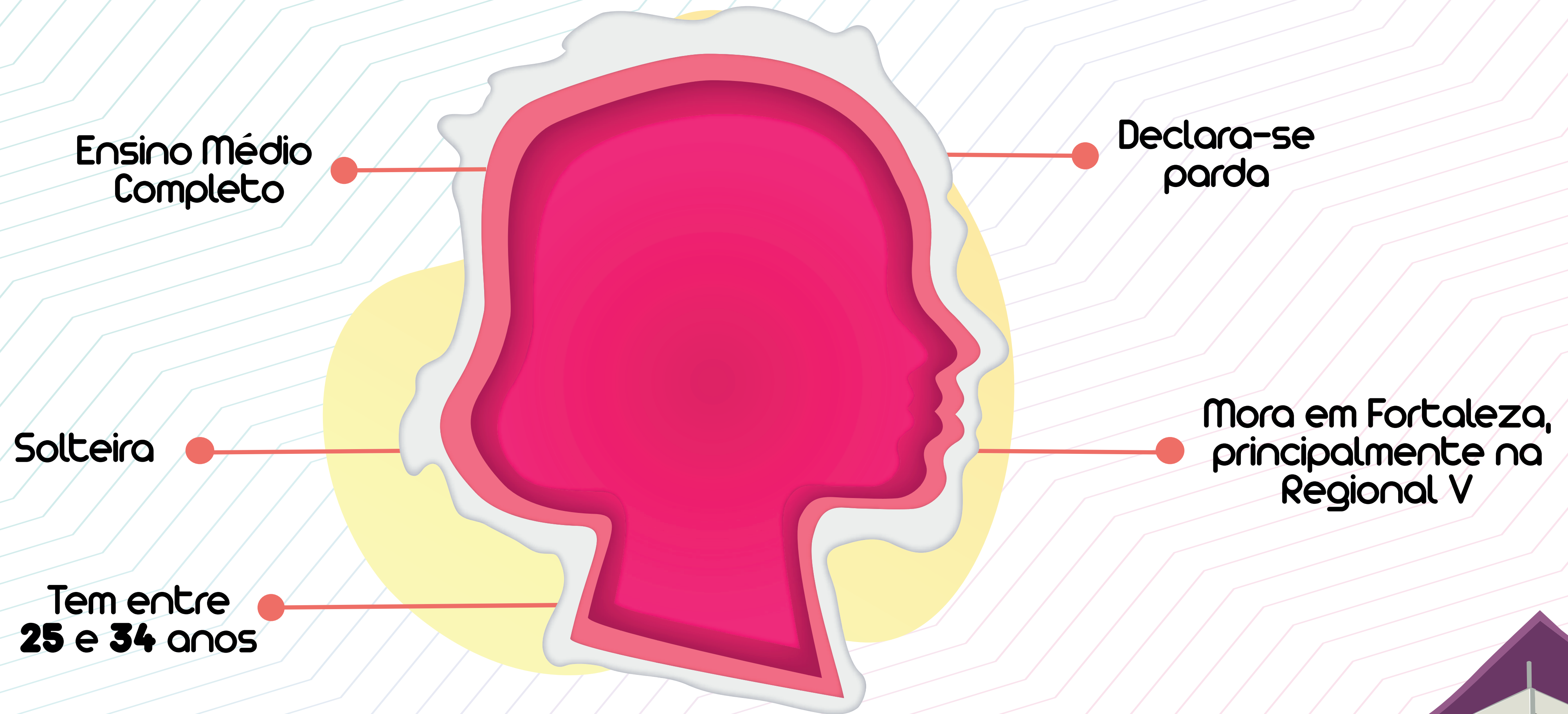
## Primeiro Atendimento



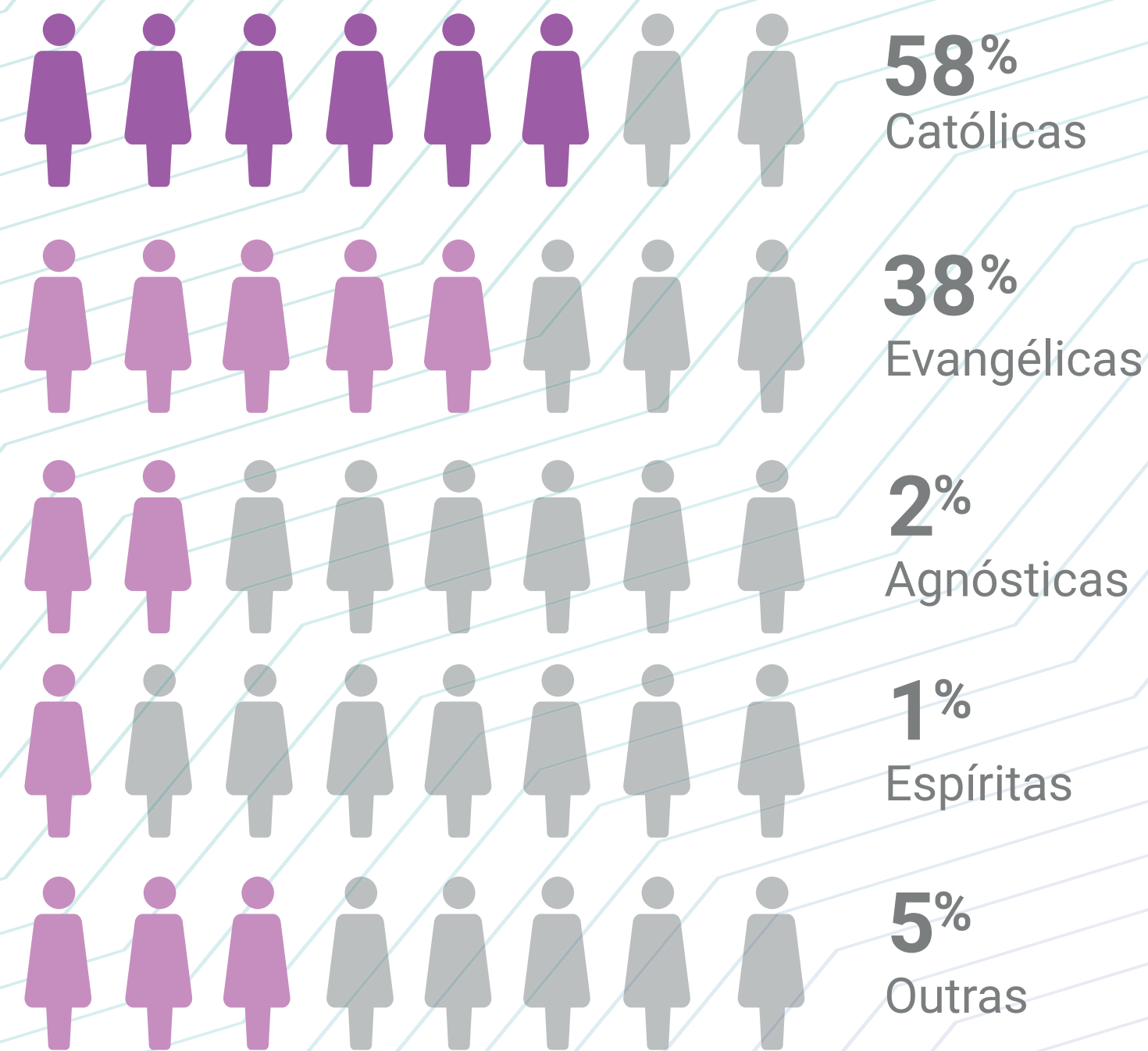
## Retornos



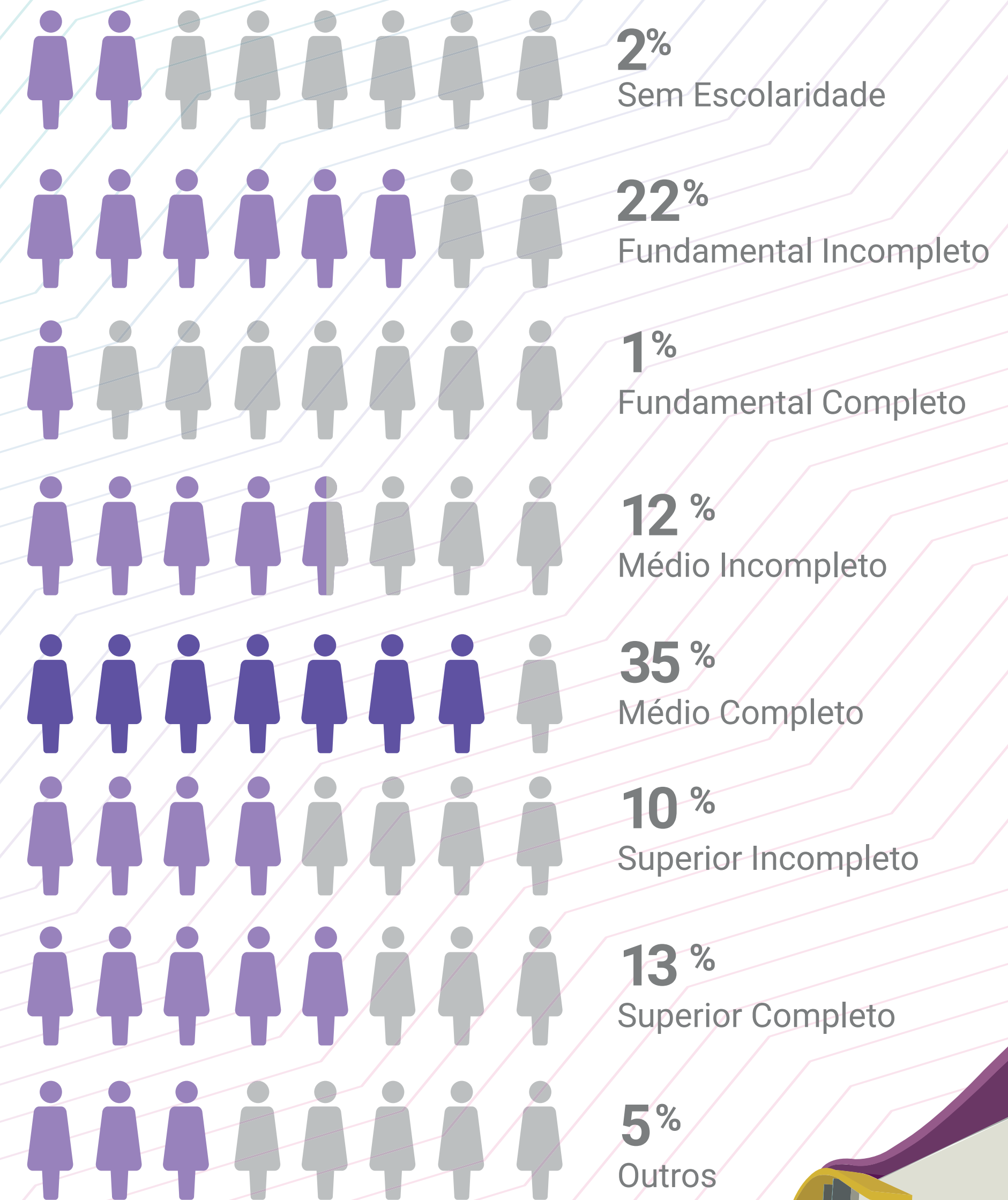
# A mulher atendida pela Casa da Mulher Brasileira



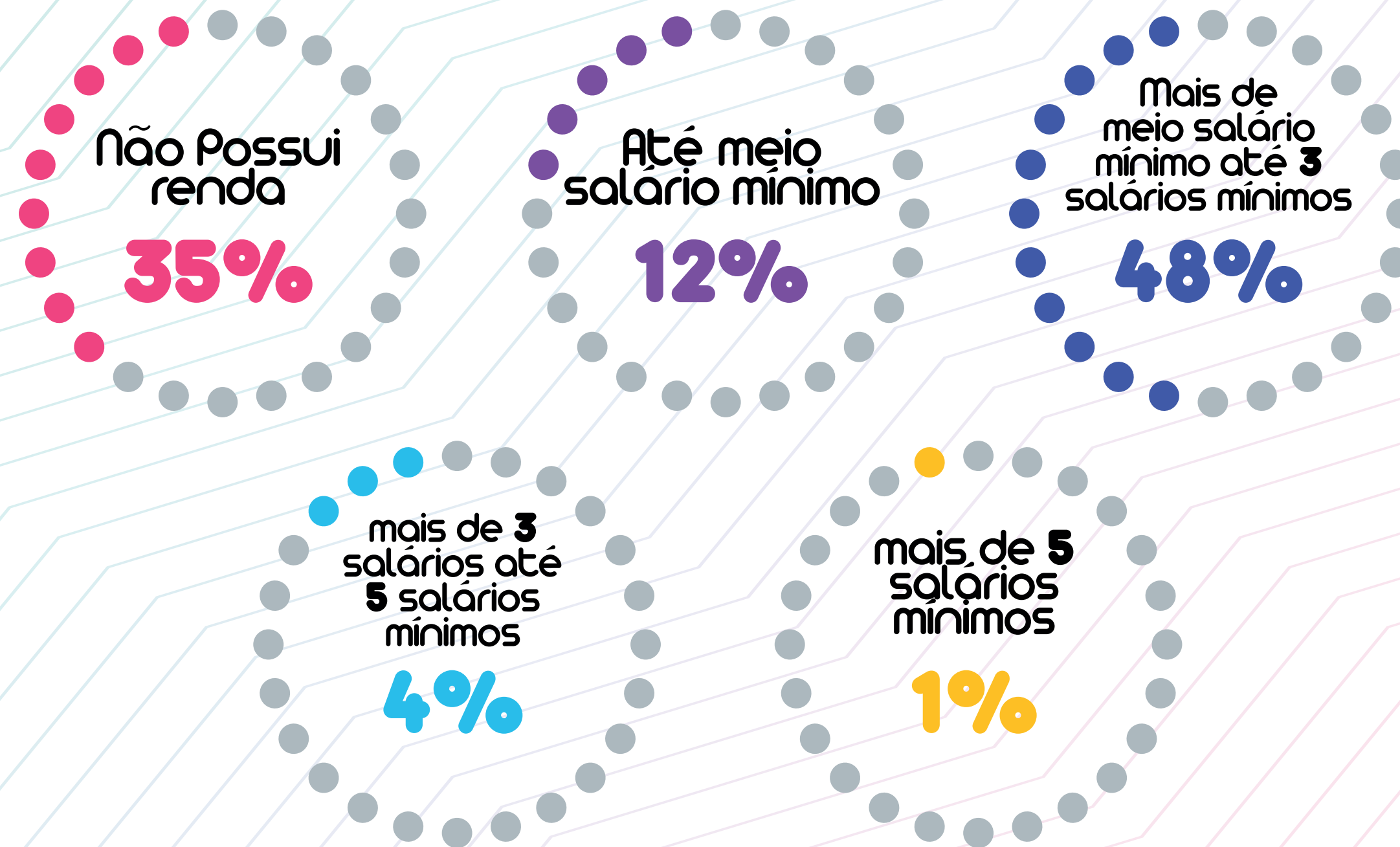
# Religião

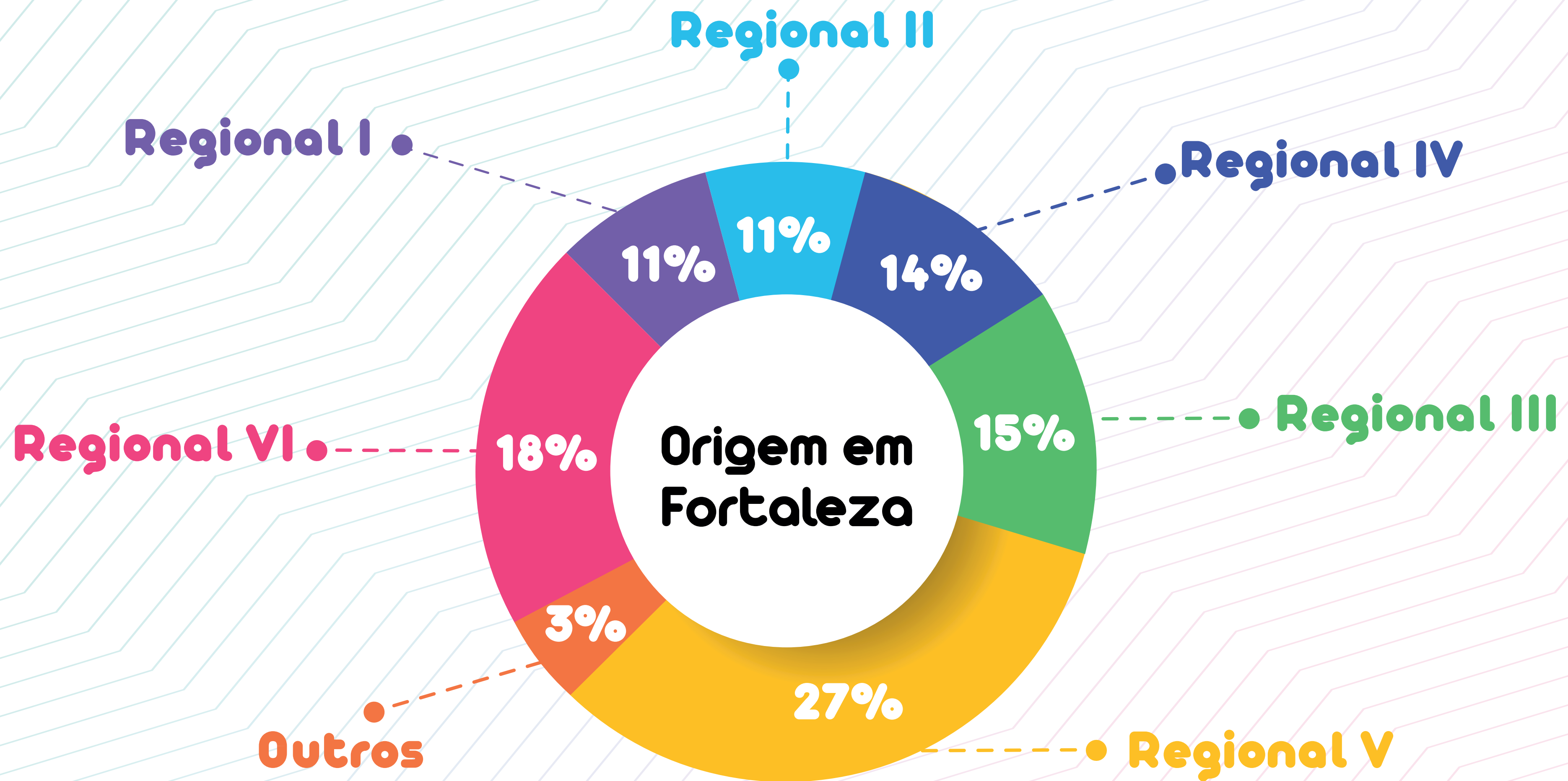


# Escolaridade

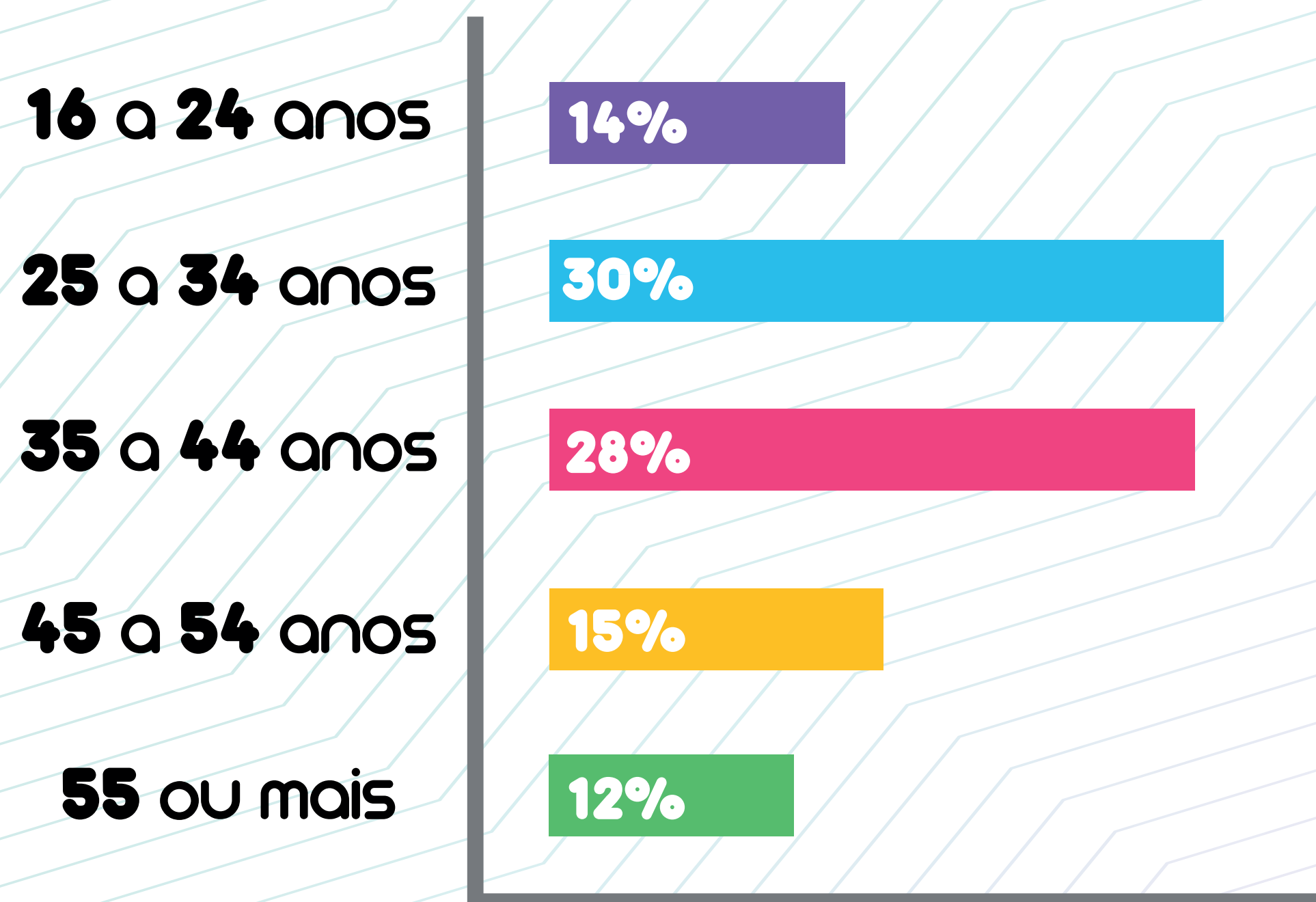


# Renda média

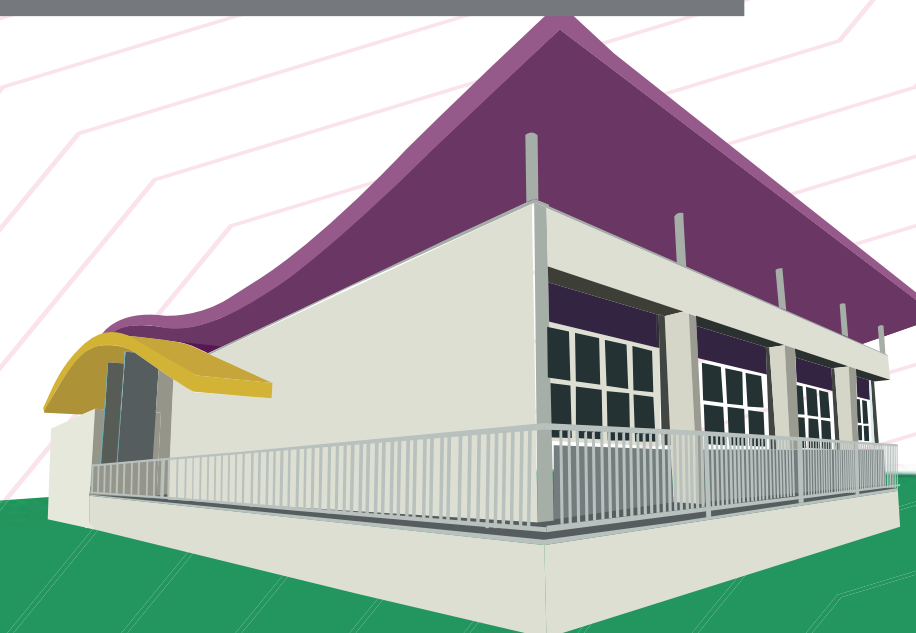
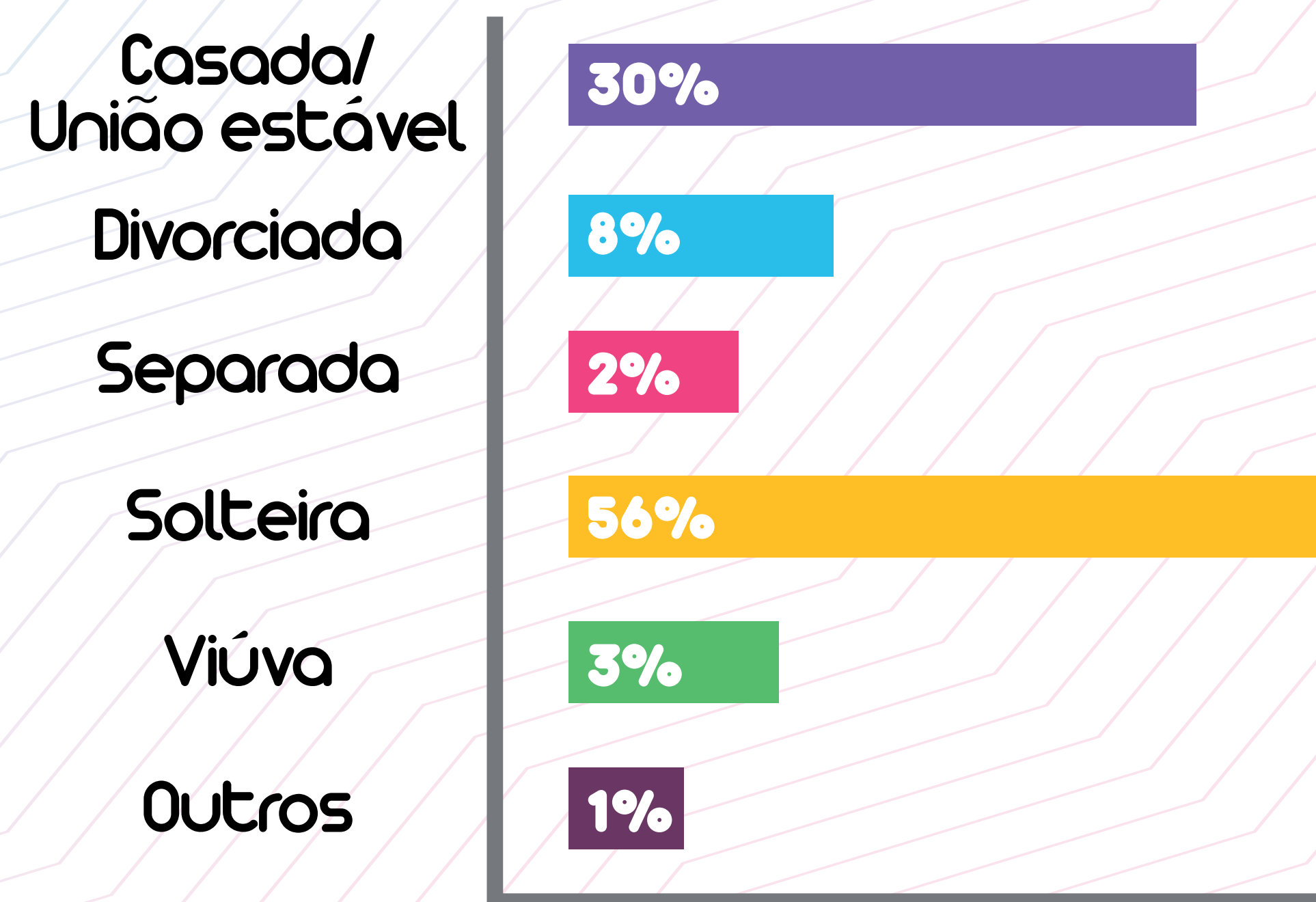




## Faixa Etária



## Estado Civil



# Raça, cor e etnia

